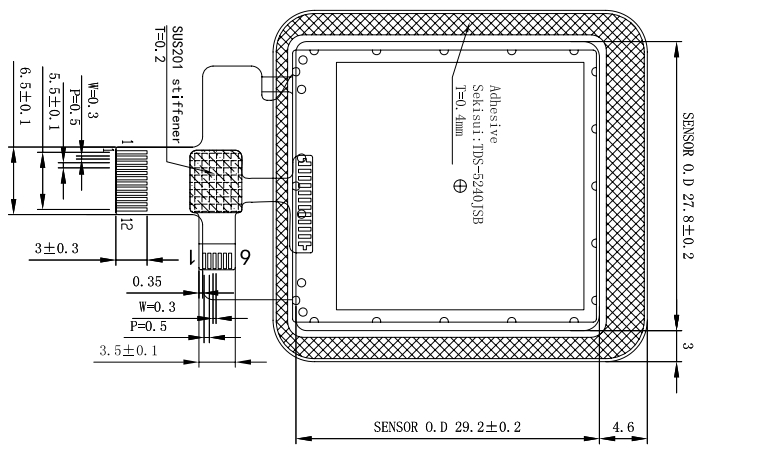
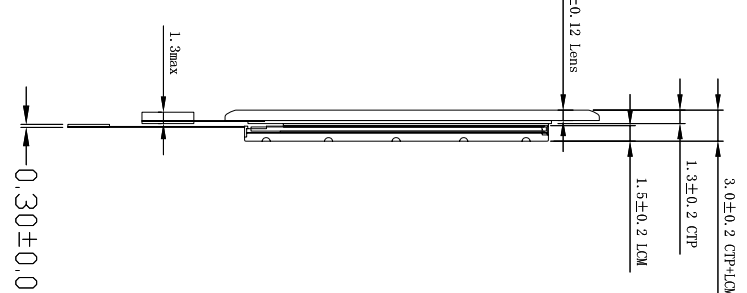
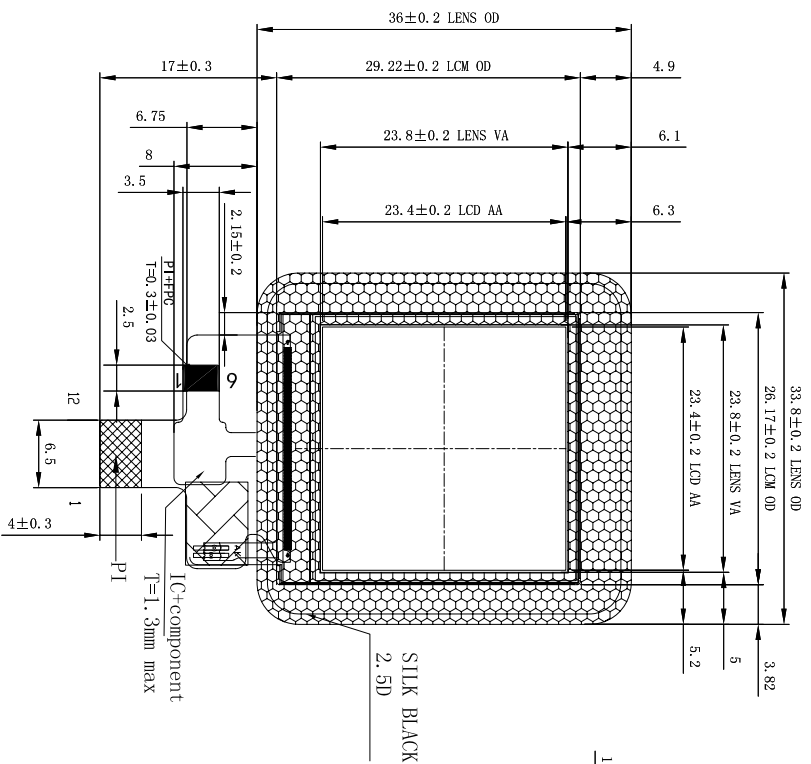


FRONT VIEW

RIGHT SIDE VIEW

REAR VIEW



4 SPI

1	GND
2	LEDK
3	LEDA
4	VDD
5	GND
6	GND
7	D/C
8	CS
9	SCL
10	SDA
11	RESET
12	GND

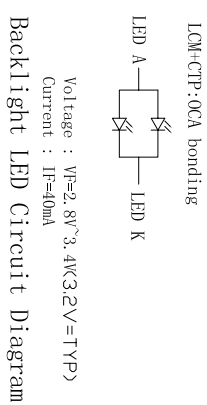
CTP interface: IIC

PIN	DESCRIPTION
1	CTP-INCC3, 3V
2	GND
3	INT1, 8V
4	SCL1, 8V
5	SDA1, 8V
6	RES1, 8V

CTP Notes:

1. Structure: G+F, IC: CST816D single-point
2. Material: t=1.0±0.1mm
3. CTP-Transmittance: >=80
4. Surface hardness >6H_v
5. Unmarked tolerance: >=±0.2
6. Environmental protection meets RoHS and REACH requirements.

Reference CTP-CN: FH34S-6S-0.5SH (T=1.0mm)



Backlight LED Circuit Diagram

- NOTES:
1. DISPLAY TYPE: 1.3", 240*240 TFT LCD
 2. DISPLAY MODE: transmissive **Normally Black**
 3. VIEWING DIRECTION: ALL 0° clock
 4. DRIVER IC: ST7789V2
 5. LCM (White 9 AVG 1/9) :
Brightness: TBDcd/m² (TYP)
Uniformity: 80% (MIN)
 6. BACK LIGHT: 2 chip white LEDs If=40mA, Vf=2.8V~3.4V
 7. OPERATING TEMP: -20° C TO 60° C, STORAGE TEMP: -30° C TO 70° C
 8. * Critical Parameter, () ref Parameter, [] cpk Parameter
Unspecified Tolerances: ±0.20mm

9. SUGGESTION: TP window size unilateral increase 0.3~0.5mm than LCM A.A
10. REQUIREMENTS ENVIRONMENTAL PROTECTION: RoHS

Rondeli Electronics CO.,Ltd

Part NO:	R13004-240240SZ-QT	VER:10
Customer NO:		PROTECTION:
APPROVED BY:		SCALE: 1:1
CHECKED BY:		DRAWN BY:
DATE:	2021.09.27	Helon
DESCRIPTION:	First VO	DATE:
REV:		DATE: